

Annual Report

2017-2018



Creating Connections



**ATLANTA
COMMUNITY
FOOD BANK**

Creating Connections

ANNUAL REPORT 2017-2018

Inside the Issue

A Word from Kyle	p.3
Food Distribution	p.4
Serving Seniors	p.5
Bruce's Story	p.5
Educating for Awareness	p.6
Helping Children	p.6
Sarah's Story	p.7
Reducing Food Waste	p.8
Building Capacity	p.9
A Special Partnership	p.10
Community Engagement	p.11
Donor Lists	p. 12-23
Board List	back cover

Our mission at the Atlanta Community Food Bank is to fight hunger by engaging, educating and empowering our community.

Join us at acfb.org

In our service area..

1 IN 5 CHILDREN

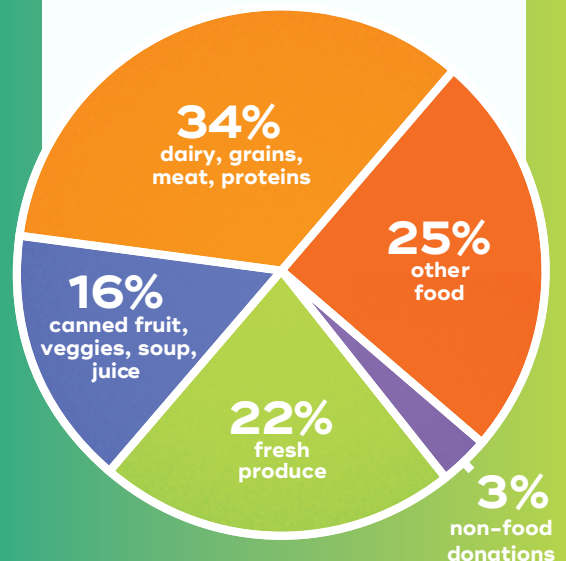
1 IN 7 PEOPLE

1 IN 11 SENIORS

..might not know where their next meal is coming from.

Distribution Breakdown

Because of you, we increased our distribution to more than 61 million meals last year.



A Word from Kyle

President & CEO



This has been another incredible year for the Atlanta Community Food Bank. Looking back, I am more inspired than ever by the energy and engagement in our community to help end hunger. Our donors and volunteers generously supported our work with even more of their time and treasure. Our partner agencies helped more of their hungry neighbors with compassion and dedication. Our team of food bankers worked tirelessly every day to expand access to nutritious food for those who need it. Each year presents new challenges and opportunities to make progress toward ending hunger in our region. Last year, thanks to your generous support, the Food Bank answered the call.

This past year we distributed enough food to provide more than 61 million meals throughout our 29-county service area. Importantly, fresh produce, meats and proteins, and other perishable foods accounted for more than 40% of the food we provided to families, as we continue to advance our efforts to provide more of the healthy and nutritious foods people need. Our team found new ways to fulfill our mission more efficiently and effectively. We built and grew partnerships. We expanded community programs and outreach efforts. We engaged more of the community in our work. All of this helped us provide more food to more people more frequently and more efficiently.

Despite this progress, and despite the ongoing strength in our economy, too many of our neighbors continue to experience hunger and food insecurity. We are more committed than ever to dramatically grow our work, so that all people have access to the nutritious meals they need. We took a big step forward into that future this year, by launching “Growing Healthy Futures,” our capital campaign to support the construction of our new home. This will allow us to source and distribute more food more efficiently and quickly distribute it to more of our neighbors who struggle with food insecurity. Our new facility will more than double our existing warehouse space and, more importantly, increase our capacity to handle more of those fresh foods and produce that are so important to building healthy lives.

Whether we are creating deeper connections within the community or creating greater access to nutritious food, we are incredibly proud of what we accomplish with your support. You can witness the impact of your generosity in the stories of the people we serve, people like Bruce (page 5) and Sarah (page 7), folks who are doing everything they can to provide enough food for themselves and their families. But sometimes they need help – help that we provide because of you. They are representative of the nearly 755,000 Georgians in our service area who rely on your support for the Food Bank every day. They are counting on all of us and I am grateful that I can count on you for your continued support. Together, we can end hunger.

Kyle Waide
President & CEO

A Record Year for Food Distribution

This year, we distributed over 61 million meals worth of food to our 29-county service area. For the sixth year running, fresh produce was the Food Bank’s largest category of food distributed. Meat/Protein also saw an increase from the year before, up 17.3%. We also were able to recover over 25 million pounds of food from 498 retail stores throughout the service area.

County	Pounds	County	Pounds	County	Pounds
BARTOW	1,359,481	FAYETTE	673,438	MORGAN	246,092
BUTTS	349,086	FLOYD	1,306,357	NEWTON	915,969
CARROLL	925,138	FORSYTH	1,084,395	PAULDING	1,161,849
CHEROKEE	1,930,068	FULTON	15,255,719	PICKENS	584,183
CLAYTON	3,103,406	GWINNETT	6,711,954	POLK	1,694,187
COBB	6,770,628	HALL	2,662,674	ROCKDALE	1,564,356
COWETA	1,681,012	HARALSON	308,179	SPALDING	714,594
DAWSON	781,535	HEARD	96,546	UNION	236,187
DEKALB	9,599,837	HENRY	2,373,785	WALTON	1,728,822
DOUGLAS	2,000,922	LUMPKIN	848,445	Service Area Totals	68,668,844



Thanks to our partnerships with 498 retail stores throughout the service area, we were able to recover over 25 million pounds of food!



Serving More Seniors

The Food Bank helps seniors live with dignity, by alleviating the tough choice between paying their utility bills or buying groceries. Our senior-focused programs continue to grow. Through the Commodity Supplemental Food Program (CSFP), the Food Bank currently works with 85 agencies that collectively distribute 4,727 CSFP food boxes monthly in 22 counties. This provides 137,870 senior meals monthly and a total of 1.7 million meals yearly.

We also offer cooking classes to seniors who receive CSFP boxes through a Food Bank partner agency. In FY 2017-2018, our licensed dieticians taught 560 seniors how to make healthy, delicious meals utilizing the pantry staples given to them in their boxes.

Additionally, our Senior Farmers Market Program provides fresh, nutritious produce to low-income seniors 60 years or older. Participants receive two \$10.00 vouchers to buy eligible foods from markets. The Atlanta Community Food Bank currently distributes these vouchers in ten counties.



Bruce's Story

I'm here to get food today because we're swimming underwater in our mortgage. I live with my 90-year-old mother and help take care of her. My father has passed, but it's when he got sick that finances got really tough. He didn't have health insurance, so we had to re-mortgage the house to pay for his treatment. Now we can barely make ends meet.

I'm 60 years old. For years, I owned a moving business and worked hard. All that activity wore my hips to the bone though. Now I'm disabled and can't work. My mother and I survive on social security and disability. It's not enough.

I don't know how we would eat without this food pantry. I come here twice a month to get what we need. It's just wonderful here. I appreciate the meat the most. Meat is too expensive for us to buy, so coming here is a treat.

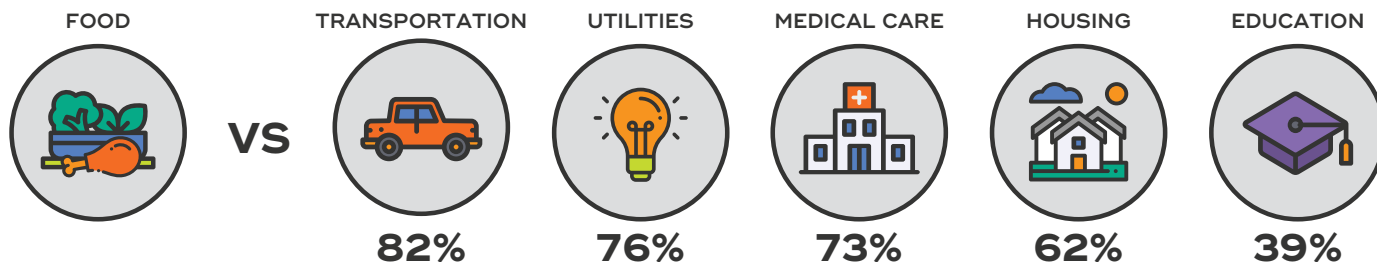
This pantry helps us survive. It helps a lot of people survive, because there are so many people who need it. This community is grateful for all its help.

1 in 11 seniors lives with food insecurity.

TOUGH CHOICES



Atlanta Community Food Bank client households frequently face tough choices in an effort to ensure they have sufficient food. The following percentages represent the people who have had to make these decisions.



Connections Through Education

The Food Bank's Education and Outreach team works hard to deepen the understanding of hunger and poverty in our community by educating both students and adults with creative programs.

Highlights of their efforts include:

- Deploying our Learn and Serve program with the Atlanta Police Academy's new recruits and multiple regional teams among Sysco's family of brands.
- Holding two Youth Summits over the summer, which engaged 42 high school students from 25 different public and private schools in the metro Atlanta area. Each student committed to a minimum of one action step to address hunger over the course of the school year.
- Hosting our second Alternative Spring Break with 15 students from area colleges and universities. Students spent time doing advocacy, education and service.

These programs result in more advocates, volunteers and supporters in our efforts to end hunger.



Helping Children Start the Day Off Right



40% of the children taking part in existing school-provided meal programs do not start the day with breakfast. In February 2018, our Child Nutrition team started working with school districts in Gwinnett, Floyd and Cherokee counties, as well as Marietta City schools, to encourage more students to take advantage of school breakfast. We continue to pursue opportunities in other counties. Whether it's a grab-and-go cart packed with breakfast that greets them at the door as they arrive or a second chance breakfast offered later in the morning, we work to remove barriers keeping students from eating. Across 20 schools, 44,201 additional breakfasts have been served.

1 in 5 children lives in a food insecure environment.

This past fiscal year we continued our Summer Meals program which helps provide meals to kids while they're out of school. Our partners served 41,359 summer meals across our service area. We also implemented 33 combination pantry/summer meals sites. These allowed school food pantries to continue through the summer, making it more convenient for families to access the nutrition they need even when school is not in session.



Sarah's Story

I work full time, Monday through Friday, as a babysitter for two kids. I also care for my own son, who is an adult but developmentally disabled, and my seven-year-old niece. My sister isn't stable. It's not fair to put a little girl through that, so even though I don't have any extra money, I offered to help.

The summer is hard on us. During school my niece gets free lunch, but in the summer I have to pay for it. Sometimes I can't afford it – but I just have to make it work somehow, you know? Sometimes I have to put something aside, a bill or such, just to make ends meet. It makes me feel sad, but I have to keep going.

When I really have nothing, I ask this food pantry for help. They are nice here, and they never turn me away because they know when I ask, I really need it for my family. The pantry does so much for many people in this community. There are lots of people out there like me, who are really struggling and can't feed their kids.

Even though it's hard, I know things will get easier –as long as I walk by faith and keep taking care of my family and doing the right thing. You gotta have faith these days. It's the only thing that will carry us through. These are hard times, but there are better times ahead.

Partnering to Reduce Food Waste

This year, the Food Bank and Second Helpings Atlanta officially formed a partnership to help reduce retail food waste in Metro Atlanta.

Under this partnership, the Food Bank will refer companies that are interested in donating perishable food in smaller quantities to Second Helpings. Second Helpings then will develop the logistics to pick up the donated food and food-related products and will deliver the items directly to Food Bank partner agencies.

The benefits for the Food Bank and our partner agencies have been incredible. Partner agencies receive more prepared foods with greater frequency from Second Helpings' contributors, while the Food Bank enables more meal distribution without additional warehousing and handling.

We have been working closely to identify new food recovery opportunities and are developing plans to test, refine and implement better approaches to reduce hunger in the Atlanta area.



Industries Compete to Fight Hunger

Everyone loves some good, healthy competition, especially when it helps end hunger in our community at the same time! Thanks to our fantastic industry-based food and fund drives, enough food and funds were raised to help provide more than 1.7 million meals!



Legal Food Frenzy
\$288,415 Raised
127 Teams

The Georgia Legal Food Frenzy is a two-week food and fund drive competition done in partnership with the Georgia Attorney General, the State Bar and Young Lawyers Division, and the Georgia Food Bank Association.



Georgia Accounting Food Fight
\$103,832 Raised
34 Teams

The Georgia Accounting Food Fight showcases the partnership of the Georgia Society of CPAs and Georgia's top accounting firms to help end hunger in Georgia.



TAG Bytes for Bites
\$32,192 Raised
17 Teams

The Technology Association of Georgia pulled together technology companies to collect food and funds for Georgia Food Bank Association food banks across Georgia.

Building Capacity For Our Partners

To reach more people in need, the Atlanta Community Food Bank recognizes the importance of investing in our partner agency network. Thanks to our generous donors, in FY 2017-2018, 12 partner agencies were each awarded a capacity building grant to purchase various warehouse equipment, vehicles, walk-in coolers and freezers. The grants enable local feeding programs to expand their capacity to serve more food to people in need.

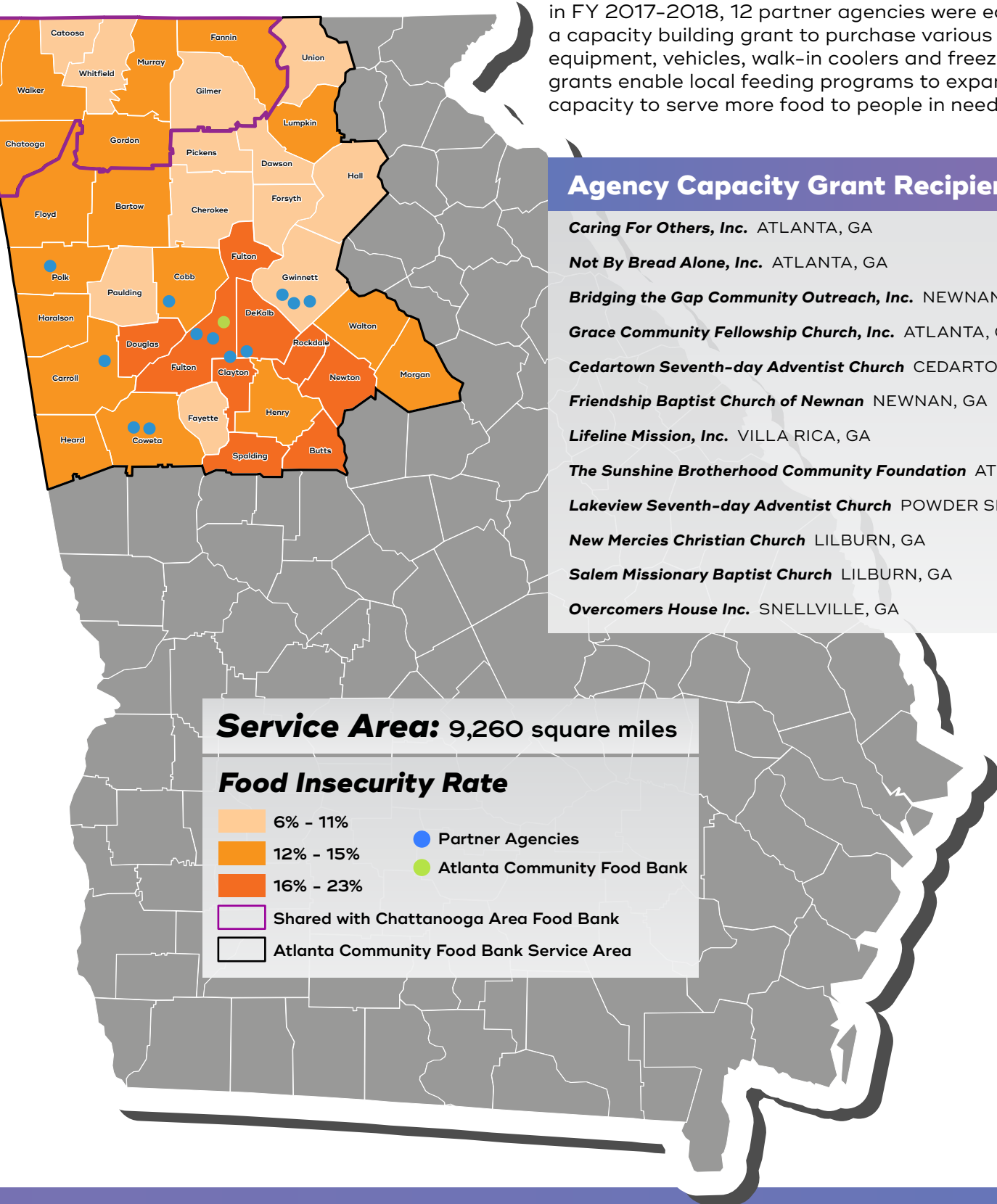
Agency Capacity Grant Recipients

- Caring For Others, Inc.** ATLANTA, GA
- Not By Bread Alone, Inc.** ATLANTA, GA
- Bridging the Gap Community Outreach, Inc.** NEWNAN, GA
- Grace Community Fellowship Church, Inc.** ATLANTA, GA
- Cedartown Seventh-day Adventist Church** CEDARTOWN, GA
- Friendship Baptist Church of Newnan** NEWNAN, GA
- Lifeline Mission, Inc.** VILLA RICA, GA
- The Sunshine Brotherhood Community Foundation** ATLANTA, GA
- Lakeview Seventh-day Adventist Church** POWDER SPRINGS, GA
- New Mercies Christian Church** LILBURN, GA
- Salem Missionary Baptist Church** LILBURN, GA
- Overcomers House Inc.** SNELLVILLE, GA

Service Area: 9,260 square miles

Food Insecurity Rate

- 6% - 11%
- 12% - 15%
- 16% - 23%
- Shared with Chattanooga Area Food Bank
- Atlanta Community Food Bank Service Area
- Partner Agencies
- Atlanta Community Food Bank



30 Years of Partnership

The Atlanta Apartment Association celebrated 30 years of giving back to the community through their annual Food-A-Thon. More than 30 different multi-family housing companies came together to raise more than 1.3 million dollars and almost 120,000 pounds of food in their 2017 campaign. Their annual parade culminates months of conducting food drives, bake sales, parties and other inventive ways to support the Food Bank.

For thirty years, the Association and its members have been passionate leaders in the fight against hunger. Virginia Love, co-chair of the Association's Community Service Committee, shared: "Hunger in metro Atlanta is a cause close to our hearts, and we're grateful for the support of our members and residents for Food-a-Thon that allowed us to reach our goal and give back to families affected by hunger in our local communities."

Engaging their residents, employees and partners, the Atlanta Apartment Association demonstrates the very best in the power of community, the impact we can have when we work together for our neighbors in need. Atlanta Apartment Association members have an unwavering commitment to the growth and vision of the future of metro Atlanta and work hard to ensure that no one goes hungry.



Responding to Disaster



In September 2017, Hurricanes Irma and Harvey hit the United States and our community sprang into action. With the generous support of Kroger, Hand in Hand, PepsiCo and donors like you, we were able to collect 30,000 pounds of food, water and cleaning supplies in just 10 days, send aid to our sister food banks directly affected, open emergency mobile pantries in metro Atlanta and deploy staff to help fellow food bankers in Texas.

Many Ways to Make a Difference

In FY 2017/2018, 27,380 volunteers gave 81,498 hours of their time.
You also can make a difference with us at one of our many volunteer opportunities.

**Product
Rescue Center**

**Kids In
Need**

**Grocery
Floor**

**Community
Gardens**

**And
More!**

Volunteering for the Community – Meet Linda

Love cooking and eating well -- and don't mind kitchen clean-up? That fits the bill for volunteer Linda Rambo. Every week, you can find Linda assisting Food Bank dietitians as they hold nutrition education and hands-on cooking classes in our Learning Kitchen.

“We have wonderful seniors that come into the kitchen, we try to teach them healthy eating and healthy cooking and they teach me something new every day.”

Linda helps seniors learn to eat healthier on a budget and gain confidence to try new and easy-to-follow recipes. When asked why she volunteers with the Food Bank, Linda said, “Simply because it's such a basic thing for food. People can't succeed in their lives unless they have food.”



Thank you for your support!

This list reflects gifts recieved
July 1, 2017 - June 30, 2018

Did you know?
95% of every
donation goes
to serve the
community.

BUSINESSES

\$5,000+

Accent Decor, Inc.
Aderhold Properties
Affiliated Behavioral Medical Group
AHP Management Corporation
AlSCO, Inc.
American Family Insurance Dreams Foundation
AmericasMart Atlanta
Amerigroup Community Care
Amerigroup Corporation
AT&T
AT&T Connected Communities
Atlanta Apartment Association
Atlanta Hawks
Atlanta Homes and Lifestyles Magazine
Atlanta Falcons
Atlanta Marriott Marquis Hotel
Barrington Hills LP
Baytree Landscape Contractors of Atlanta, Inc.
Benevity
Berkadia Commercial Mtg. LLC
Big League Impact, Inc.
Bloomberg
Briggs Equipment
BTIG LLC
Buckhead Beef Company, Inc.
C.R. England - Global Transportation
Caliber Collision Centers
Carrier Corporation
Carter USA
CF Real Estate Services LLC
Clear Channel Atlanta Radio
Coca-Cola North America
Colonial Properties Services Inc.
Comcast

Competitor Group Inc.
Council of Supply Chain Management Professionals
Cox Automotive
Cox Enterprises, Inc.
Cox Media Group
Currey and Company
D&K Suit City
Davio's Northern Italian Steakhouse
Delta Air Lines, Inc.
Dominion Enterprises
Duke Realty Corp.
ECI Management LLC
Emory Healthcare
Empire Distributors, Inc.
Eternal Jewels LLC
Facebook
Fifth Group Restaurants LLC
First Communities
Fleishman-Hillard Inc.
ForRent.com
FreshPoint of Atlanta
Genuine Parts Company
Georgia Power Company
Georgia-Pacific
GES
Griffith Foods
Hall Booth Smith, P.C.
Hilton Atlanta
Honeysuckle Gelato
Hudson Insurance Group
IceBox, Inc.
Integral Property Management, LLC
Intelligent Chiropractic LLC
Kaiser Permanente
KeyBank Real Estate Capital
KeyCorp
Kimberly-Clark Corporation
Lincoln Property Company
Macy's Corporate Services, Inc.
Macy's Systems and Technology, Inc.
Maintenance Supply Headquarters
Making Change
Manheim, Inc.
Marriott International, Inc.
Material Handling Institute
Matrix Residential
Medlytix
Moore Colson
Neadwerx, Inc.
Network For Good
Nordstrom
PayPal Giving Fund
Peachtree Tents & Events
Pepsi-Cola

Pollack Shores Real Estate Group
Preferred Apartment Communities
Proof of the Pudding by MGR., Inc.
Publix Super Markets Charities, Inc.
Quality Technology Services
Randall-Paulson Architects
Ready Fitness
Real Floors
Revenue Analytics, Inc.
Signature Management
Synchrony Financial
Sysco Atlanta
Taste Of The NFL
The Optimist
The Ritz-Carlton Hotel, Atlanta
Tokio Marine HCC
Tribridge Residential LLC
Troutman Sanders, LLP
Turner Construction Company
UBS Business Solutions
United HealthCare Services, Inc.
USAA Federal Savings Bank
Valet Living LLC
Warren Averett
Whitley Buckhead Atlanta
Whole Foods Market - Corporate
WXIA-TV 11
Xorbia Tickets

CIVIC

\$5,000+

Atlanta BeltLine Partnership
Canstruction Atlanta
CareSource
Clark Atlanta University
Feeding America
Food Research & Action Center
Georgia Food Bank Association, Inc.
Junior League of Atlanta
Share Our Strength
Strayer Education, Inc.
U.S. Poultry and Egg Association
United Way of Greater Atlanta
Woodward Academy Primary School

FOUNDATIONS

\$5,000+

3M Foundation
AAA Fund
Aaron and Angel Goldman Foundation
Aaron's Foundation
Aegon Transamerica Foundation
Ann M. and Robert M. Holder Foundation
Annie Bennett Glenn Fund
Aon Foundation

Assurant Foundation
 Atlanta Foundation
 Bank of America Charitable Foundation
 Bertha & Hix Green Family Foundation
 Cecil B. Day Foundation, Inc.
 CHEP Charitable Foundation, Inc.
 Chick-fil-A Foundation
 Cobb EMC Community Foundation, Inc.
 Community Foundation for Greater Atlanta
 Community Foundation of West Georgia
 Crowe Horwath Foundation
 Douglas J. Hertz Family Foundation, Inc.
 Ecolab Foundation
 Enterprise Holdings Foundation
 Feed A Billion
 Fidelity Charitable Gift Fund
 Finn Brooks Family Foundation, Inc.
 Ford Motor Company Fund
 Frances Hollis Brain Foundation Fund
 Frances Wood Wilson Foundation, Inc.
 Fraser-Parker Foundation
 Fred and Catalina Aranas Family Foundation
 General Mills Foundation
 George M. Brown Trust Fund
 Georgia-Pacific Foundation
 Greater Salina Community Foundation
 International Paper Foundation
 J. Marshall and Lucile G. Powell Charitable Trust
 J.C. Kennedy Foundation, Inc.
 James M. and Ruth E. Wilder Foundation, Inc.
 Jewish Federation of Greater Atlanta, Inc.
 Joe E. Johnston Foundation
 John and Mary Franklin Foundation
 John and Polly Sparks Foundation
 Kakarala Foundation
 Kroger Company Foundation
 Livingston Foundation, Inc.
 Mary Allen Lindsey Branan Foundation
 Merancas Foundation, Inc.
 Morgan Stanley Global Impact Funding Trust
 Mr. and Mrs. J Craig Inman Family Foundation
 National Christian Foundation
 National Philanthropic Trust
 Nationwide Insurance Foundation
 Norfolk Southern Foundation
 Nunnally Foundation, Inc.
 OdysseyRe Foundation
 Oliver Brooks Jr. Revocable Trust
 Post Hope Foundation, Inc.
 Renaissance Charitable Foundation
 Ressler/Gertz Family Foundation
 Rich Foundation
 Roderick S, Flossie R and Helen M Galloway Foundation

Romaniello Family Foundation, Inc.
 Schoenbaum Family Foundation, Inc.
 Schwab Charitable Fund
 Sodexo Foundation, Inc.
 Swiss Re Foundation
 Thalia and Michael C. Carlos Foundation, Inc.
 The 2492 Fund
 The Anthem Foundation
 The Arthur M. Blank Family Foundation
 The Blake Family Foundation
 The Coca-Cola Foundation
 The Home Depot Foundation
 The Jennifer and Thomas Bell Family Foundation
 The L&C Wood Family Foundation, Inc.
 The Mark C Pope III Foundation
 The Molly Blank Fund of The Arthur M. Blank Family Foundation
 The Morningside Foundation Fund
 The O. Wayne Rollins Foundation
 The Ray M. and Mary Elizabeth Lee Foundation
 The Sartain Lanier Family Foundation
 The Thomas M. and Irene B. Kirbo Charitable Foundation
 The UPS Foundation
 The Wilbur and Hilda Glenn Family Foundation
 The Wilson Family Foundation
 The Woodforest Charitable Foundation
 The Zeist Foundation, Inc.
 Tim and Lauren Schragger Family Foundation
 TJX Foundation, Inc.
 UBS Donor-Advised Fund
 Vanguard Charitable Endowment Program
 Vogel Family Foundation, Inc.
 Waffle House Foundation, Inc.
 Walmart Foundation
 Walton Electric Trust, Inc.
 Wells Fargo Foundation
 Westerstroms Charitable Trust
 William Josef Foundation
 Winston-Salem Foundation



With the highest 4-star rating awarded by Charity Navigator for 7 consecutive years, we are a trustworthy investment in the community.

GOVERNMENT

\$5,000+

DeKalb County
 Emergency Food and Shelter Appeals Board

Fulton County
 Georgia Department of Human Services – Benefit Outreach
 Georgia Department of Human Services – Family Services
 The National Council on Aging (**)

RELIGIOUS

\$5,000+

Ahavath Achim Synagogue
 Cascade United Methodist Church
 Catholic Archdiocese of Atlanta
 Corpus Christi Catholic Church
 Peachtree Presbyterian Church

FOOD AND RETAIL DONORS

A Garcia Trucking & Produce
 Aldi
 Amazon
 BJ's
 Costco
 CVS
 Gate Gourmet
 General Mills
 Gordon Food Service
 J.M. Smuckers Company
 Kellogg Company
 Kraft Heinz
 Kroger
 McLane Company
 Mondelez International
 Nestle
 Publix
 Sam's Club
 Sprouts
 SYSCO
 Target
 Trader Joe's
 United Natural Foods
 US Foods
 Walmart

MATCHING AND EMPLOYEE GIVING

Abbot
 Accenture LLP
 Adobe
 ADT
 Aetna Foundation, Inc.
 Akron-Canton Regional Foodbank
 Alexion
 Allstate
 Ally Financial Services
 American Express
 American Tower Coporation
 America's Charities

Ameriprise
Anthem
Aon Foundation
Apple
Arthur J. Gallagher Foundation
Arthur M. Blank Family Foundation
Assurant
AT&T
Bank of America
Bank of New York Mellon
Benevity
Betty and Davis Fitzgerald Family Foundation
Boston Consulting Group
Bright Funds Foundation
British Telecom
C. R. Bard, Inc.
Cambridge Foundation



With your help, we are able to serve the 291,000 hungry children in our service area.

CarMax Foundation
Century Link
Charles Schwab Foundation
CHEP Charitable Foundation, Inc.
Cisco
Clorox
Club of Hearts, Inc. - Georgia Power
Coca-Cola
Comcast Foundation
Consiva
Core5 Industrial Partners LLC
Daugherty Business Solutions
Dell
Delta Dental
Delta Force Realty, Inc.
Deutsche Bank Americas Foundation
Disney
Dun and Bradstreet
E*TRADE Financial
Equifax, Inc.
Ericsson, Inc.
First Data Corporation
FM Global
Four Seasons
Gap, Inc.

GE Foundation
Genentech
General Mills
Getty Images
GitHub
GlaxoSmithKline
Global Impact
Goldman, Sachs & Co.
Good Done Great
Google
Graham Holdings
Home Depot
Homrich Berg
HunterDouglas
Huron Consulting Services, LLC
IBM
ICE NYSE Foundation Inc.
IDI
Illinois Tool Works
InterContinental Hotels Group
Intuit
John Hancock Financial Services, Inc.
Johnson & Johnson Family of Companies
JP Morgan Chase
JustGive
KEH Camera
Kimberly-Clark
KPMG
Lebovitz Family Charitable Trust
LexisNexis
Liberty Mutual
Macy's Foundation
MARTA
McKesson
MGM Resorts Foundation
Microsoft
Morgan Stanley
Navigant
Neiman Marcus Group
New York Life
Nextran Truck
Nordson Corporation
Norfolk Southern Foundation
Oracle
Owens Corning
PepsiCo Foundation
PEW Charitable Trust
Pitney Bowes
Pledgeling Foundation
PNC Foundation
Portland General Electric
Pricewaterhousecoopers, LLP
Quintiles
Red Hat
Red Wing Shoe Company Foundation

Rexnord Foundation Inc.
RLI Insurance Company
RSUI Indemnity Company
Salesforce
Sanofi Foundation of North America
Sapient
SasolGIVES
Starbucks
State Farm
SunTrust
Synchrony Financial
Tableau Software Foundation
Tailored Shared Services LLC
Target Corporation
Teradata
Thrivent Financial Foundation

HARVEST LEGACY SOCIETY

****Planned Gift has been realized***

Judge Dorothy Beasley
George T. Bently Jr.*
C. S. Burgess Jr.*
Noelle and Scott Davis
Roy A. Dorsey*
Lee Ferris
Dorothy K. Fierst*
Durward Hill Fincher*
Kathleen Gaboardi and Jerry Dubner
Stan and Jamie Green
Dennis E. Grimm*
Kathleen R. Gundry
Heist Revocable Trust
John Jay Johnson*
Laban S. Johnson Jr.*
Rob and Carolyn Johnson
John G. Kemp*
Thomas M. Longino Jr.*
Carlos and Carol Martel
Shannon Hunter Mitchell*
Robert and Lisa Parker
Virginia Proctor*
Lisa A. Ramey
Gary L. Rosengreen*
Janet Patricia Sammons*
Elizabeth and Jonathan Silber
Rita A. Sislen
Margaret and John Stagmeier
Wayne and Lee Harper Vason
Katherine J. Watkins*
Mark Weinstein
Kenneth and Jean Wells
Claude and Carroll Wills
Hilary M. Wilson and Scott Mullennix
Lewis Winter*
William and Lillian Woolf

LEADERSHIP CIRCLE

Individuals \$1,000+

***Indicates monthly donors**

William E. Abbott
Janice and Ronald Abercrombie
Anna M. Bolen
Thomas L. Abernathy
Cheryl and W. Doug Adams*
John S. Adamski
Daniel and Laura Addabbo
Sam and Kelly Addeo

“We believe that we are given resources to help others. Your organization is great at multiplying gifts and has the vision to get food into the hands of those who need it.”

–Sam and Kelly Addeo

Julie Adkins
Stuart and Karen Adler
Sarah and Michael Agurkis
Amy Aidman and Uriel Kitron
Forrest and Christine Ainsworth
Erika Alexander
George and Martha Alexander
Rita and Robert Alexander
Peter and Kay Amann
Elizabeth Ambacher
Bryan and Suzanne Ammons
Diane L. Ancona
Lisa D. Anderson
George Andl and Linda Pogue
Matthew and Rebecca Angell
M. Tanika Antonio
Jed Appelrouth
Catalina Aranas
Alvaro Arauz
James Arena
Jeff Raw
R. Lawrence and Kathy Ashe
Sharon Aukerman
Tomie and Catherine Aust
Aaron and Brooke Avera
Anne H. Averett
Karla and Lynn Avery
Carlo Baglione
Robert G. Bahurinsky
Donald Bailer
Ellen A. Bailey
Gina Bailey
Hope M. Baker*
Jennifer and James Baker*
Adam and Katie Balthrop

Aarati and Eshwar Bandlamudi*
Leadus Bankston
Julie Barber
Jan C. Barlow
Patricia T. Barmeyer
Holly and David Barnette*
Ray and Cathy Barrows
Bridgette A. Barry and Peter S. Dardi
Jill D. Baska
Natalie and David Batchelor
Richard Battle
Ellen and Duncan Beard
Karen Beardslee and Susie McGinnis
Judge Dorothy T. Beasley
Mike and Kim Becker
Milt and Adriana Becker
Nancy Bedard
Karissa and Kanwar Bedi*
Riddick and Callie Ellis Beebe
Frank Beeland
William M. Behlke
Lilia R. Bell
Thomas and Jennifer Bell
Paul Benamy
Herbert W. Benario
Julian Bene and Amy Lederberg
Kathleen and Michael Bennett
Joe and Barbara Bennett-Paris
Brad and Mary Benton
Carly Berman
Marcelo Bernal Pedro
Ira and Martha Bernstein
Sandra Berry
William A. Berry
Matthew and Pam Bettis
Michael and Maria Betz
Matthew J. Bianco
Ralph B. Bilbrey*
Joseph Birbiglia
Peter Birnbaum
Edmund M. Birnbrey
Christopher G. Bishop
Joseph W. Bishop
Marvin and Brenda Bittinger*
Frank and Liz Blake
Michael Blanton
John and Angela Bleacher
Peter and Elizabeth Block
Jennifer Bloom
Barbara M. Blount*
Megan and Justin Bluth
Dana and Phillip Boggs
Joseph Boland
Matt Bolch and Marilyn J. Richtarik
Kim D. Boldthen

Bertram S. Boley Jr.
Jeffrey Bolick
Joanna Bonsall
Judith and Wayne Book
Daniel W. Boone III
David Borland
Jeanne Boudreaux and David L. Jaye
John and Barbara Bourbonnais
Ronald P. Bouterse and Denise Bomberger*
Heidi Boutwell
Robert and Mary Beth Bova
Steve Bowen
Nathaniel Bowers
Richard and Sandra Bowers
Walter and Sharon Bowles
John and Cory Boydston
Sherrie Boylan
Beth H. Brady*
Nancy F. Bramlett
Meryl Braunstein and Alan Shenberg
Rita Breen
Caleb Brennehan
Elizabeth and Charles Brinkley
Stan and Sharon Brinkley
Martha and Toby Brooks
Lance and Janne Brosovich
Jany A. Brown
Ray N. Brown
Robert Brown
Rodger and Elizabeth Brown
Carol J. Brull
Joanne E. Bryant
Yvonne W. Buchanan
Michael Buckner
Michael Budenholzer
Shelia Buford
Lucinda Bunnan
Melissa Bunnan-Jernigan
Carol F. Burgess
Mike and Therese Burke*
Mark M. Burks
Bradley Burman
Brandi Burton
Valorie Burton
Eric and Mary Busko
Ann W. Butler
Deborah M. Butler
Edmond and Emily Butler
Linda Butler
Nell A. Butler

“Every person deserves to be food secure. We are proud to support the Food Bank in these efforts.”

–Matt Bolch and Marilyn Richtarik

Russell and Alyce Butner
 Thomas Butsch
 Katherine Buttler
 Pam K. Buzbee
 Dale and Manuel Cadrecha
 Jonathan Calhoun and Tiffany Jones
 Jan S. Callahan
 Viveca I. Callahan*
 Lisa S. Cameron
 Howard A. Campbell*
 Jane E. Campbell
 Jean and Thomas Campbell
 Paul Cantey*
 Cecilia H. Cantrell
 Richard and Renee Capriola
 Chris Carlos and Nicole Jockisch Carlos
 Helen A. Carlos
 Kari A. Carlos
 Julie and William Carlson
 Azarina and James Carmical
 James and Sharon Carmical
 Richard and Emily Carpenter
 Chip and Becky Carter
 F. John and Cynthia Case
 Louise L. Cate
 William and Sally Cates
 Andrew Cathy
 Thomas Caudill
 Alison and Wright Caughman
 James C. Chambers
 Scott R. Chambers
 Stephanie J. Chance
 Jeanne and Jerry Chandler
 Janet M. Chapman*
 Thomas and Karen Chapman
 William and Millay Chappell
 Lorraine Charman
 B. L. Chastain
 David and Margaret Cheek
 Camden and Mary Cherbonnier
 Harrell W. Chesson
 Wendy and Andrew Childers
 Teresa and Roosevelt Childress
 William J. Ching
 Tom and Juanice Christian*
 Neil and Jacquelyn Christman
 James Cifelli
 James and Beverly Clark
 Kevin and Lynn Clark
 Vergena Clark
 Fiona and Andrew Clements
 John and Elizabeth Cleveland
 Alan R. Click*
 Brad and Carolyn Clifton
 Sue Clites and Penny Brown

Gary and Nancy Cochran
 Edith D. Cofrin
 Peter and Barbara Cohen
 Shlomo Cohen
 Richard and Ellen Colby
 Dr. and Mrs. James Collins
 Jo Ann Collins
 Betty Conn*
 Deborah and Victor Connell
 James Connell
 Kathleen G. Coogan
 John and Beverly Cook
 Robbi Cook*
 Ruth F. Cook
 Michael and Emily Cooper
 Nettie Copeland
 David M. Copher
 John and Rebecca Coppedge
 Amy Corn
 Linda and Jack Cosby
 Karen A. Courie and Juan Rodriguez
 Shane and Kerry Covington
 Alan E. Cowart
 David and Nancy Coyle
 Bruce Crabtree and B.J. Erb
 Linda Craig
 Rebekah and Jonathan Cramer
 Timothy H. Crawford
 Betty and Thomas Crews
 Arthur L. Criscillis
 Paul and Diane Criscillis
 Linda L. Crowther
 James Cullinan
 Dorothy A. Cunningham*
 Maribeth and Chris Cunningham
 Erik and Laura Curns*
 Bradley Currey Jr.
 Russell M. Currey and Amy Durrell
 Larry and Lois Curry
 Carolyn R. Cushing
 Thomas and Julie Cutler
 David Cutshall
 Jason Daffner
 Alan and Carol Dahl
 Daryl R. Dally
 Christopher Dambrosio and Ryan Ingram
 Alice Damian
 George and Bonnie Daneker
 Danni S. Daniels
 Regina and Kelsie Daniels
 Louisa and Mike D'Antignac
 David and Anne Dantzler
 Denise Dauphin
 Joan Davidson
 Bill and Amy Davies

Heather and Stephen Davis
 James and Trina Davis
 R.K. Davis and Mary Jones
 Santresa A. Davis
 Valerie G. Davis
 Winifred Davis
 Ellen and Mark Davison
 Kathleen and Steven de Groot
 Patricia De Heer
 Peter and Vivian De Kok*
 Holly and David Deckebach
 Nicki DeCurtis
 Justin Denard
 Mack A. Dennis
 Lynne F. Derus
 Susan and Hartwell Dew
 John C. Dewitt
 Amity B. Dey
 Andrew and Alexis Dickerson
 Adam and Beth Dieterich
 Jane and Daniel Dillon
 Paul Diorio
 Deidre and Robert Dixon*
 Carolyn B. Dobbins
 Donna Dobmeier
 Sandra A. Dockett
 Gina and Brent Dodson
 Jules and Kittye Dominguez
 Frank Domonousky
 Barton A. Donaldson
 Robert Dopp and Sharon Stein
 David and Laudette Doudna
 Dennis H. Drees
 Andrew and Karen Drexler
 Laura M. Drummond
 Laura Dudley
 Surya Duggirala
 Sandy and Tess Duncan
 Mr. and Mrs. Eric Duncan
 Willeam Duncan and David Blakeley
 David Dunham
 Judy L. Dunn*
 Cheryl and Daniel Dupree
 Anissa Durairaj
 William Durrett
 Mary Ellen and Raymond DuVarney
 J. M. Dwyer Jr.
 Kyle Dye
 Elaine C. Dyer
 James and Melissa Eaton
 Brantley Echols*
 Derek C. Economy and Ann Walter
 Glenda J. Edenton
 Charles Edmondson
 Steven and Barbara Edwards

Lisa and John Eggleston	Stanley and Diane Friedman	Joe Habachy
David and Debby Eidson	Thomas and Andrea Fuller	David Haddad
William C. Eisenhauer	Marie Gaffney*	David and Mary Haddow
Anne B. Eldridge	Robin Gagnon	Wallace G. Haislip
Chad Elkins	Anthony J. Galioto	James C. Hale
Michael Elliott*	Patrick and Eileen Gallagher	Porter Hale
Robert and Suwattana Elliott	Barbara and Jeff Galloway	Jeffrey Hallett
Glenn T. Elsey and Rejani C. Bogo	Susan Gampfer*	Tim Hallmark
Dana W. El-Shaakir	Neel J. Gandhi	Brenton Hamilton
Patricia and Joseph Englert	Cynthia and Thomas Ganschow	Russ and Yuki Hammers
Sharna and Michael Epstein	Stephen and Karin Gant	Jeff and Jennifer Hammill
Judy Espejo	Andrew Garber	Anne Hammond
James and Janet Ethridge	Emily Garcia*	Matthew S. Hammond
Virginia J. Eubanks	Olivia R. Gardner	Marie and Eric Hansen
David M. Evans	Linda and Ronald Garrett	Michelle Hanus*
Gail H. Evans	Mary Frances and Thomas Garrett	Esther P. Harbert
Todd and Dorothy Evans	David and Martha Garrison	Clay Hardman
Henk H. Evers	Scott Gasparini	Lynn T. Haremski
Dedra Fabre	Sam Gassel	Clinton A. Harkins
Joyce M. Fadler	Christi and Kevin Geiger	Joyce and Thomas Harmon
David Fagin	Eldon E. Geisert	Sue W. Harmon
Ellen Farnsworth*	David and Nancy Geller	Bobby Harper
Charles Faust	Heidi and David Geller	Glenda S. Harper
Martin and Alona Fayer	Matthew and Doris Geller	Jeffrey C. Harper
Toni Featherstone	Steve Giancola	Tyson G. Harper
David and Karen Feldman	Stephen Gibson	Jacquelyn Harris
Tricia Ferguson	Judy Gifford	Erica Hartmann and Daniel Bowers*
Vivienne and Bradford Ferguson	Pamela and Micheal Giles	Joanne Harwood
Corbin Feroletto and David Feroletto	James B. Gillespie*	Mary-Alice and Jack Hassard
Patrick Ferrer	Elaine and Tim Gilrane	Jean A. Hatfield
Martha Fessenden and Suzanne Schultz	Raymond and Jillian Giornelli	Mangesh Hattikudur and Lizzie Jacobs
Bryan and Barbara Fields	Julie Glasson and Michal Ilai	Tracey S. Hawkins*
Amy and Ken Figueroa	Jonathan and Suzanne Glenn	Michael Hayes
Catherine C. Fike	Marc and Kimberly Glenn	Patricia Healy
Benjamin and Jennifer Findley	Joshua S. Golden	Steven and Debbie Heida
Rhonda and Robert Finkel	Andrea and Gerald Goldklang	Lynne Heidelberg and Rebecca Bittinger*
Ed and Lori Fisher	Aaron and Angel Goldman	Harry J. Heiman and Abby Friedman
Wendy C. Fitchjarrell	Alexa and Robert Goodman	Laura Helms
Ryan J. Flanagan	Carolyn and David Gould	Roy Hendee III
Bryan Fleming	S. Keith Graham	Hillary Henderson
Peter Fodero	Jennifer Graham-Johnson and David Johnson	Daniel and Cassie Henning
Douglas F. Foley	Sammy Grant	Wendell and Betty Henry
John and Hilary Ford	William Graves Sr.	Darrell L. Hensley Jr.
Nicole and Brandon Forde*	Mario and Rachelle Green	Janice Herbert-Carter and Jerome Carter
Emily and David Fournier	Paul E. Grice	Ann J. Herman
Dallas and Samuel Franklin	Benjamin E. Griessman	J. E. Herndon
Stephen and Catherine Franks	Daniel and Constance Griffin	Joy Herndon
Linda C. Fraschilla	Patricia A. Grindo	Oleta Herron
Ezra Frazier	Mark K. Gromek	Felicia W. Hersch
James F. Frazier, Jr.	James Guess	Linda and Keith Heston
Sherry and Michael Freitas	Lisa and Anthony Guinta	Charles and Zoe Hicks
Theodore and Stacy French	Louise S. Gunn	Captain Maria S. Higgins
Jennifer C. Friday	Guy T. Gunter	Paige and Patrick Highsmith
Paul and Barbara Friederich	Tay and Akshay Gupta	Billy B. Hill
Ian and Jessica Friedlander	Marta Gwinn and John Long	Ciji Hill

Hilary and Scott Hill
 Leslie Hill
 Rachel D. Hillhouse
 Sharon Hilton
 Rodney and Sharon Hinds
 Alan Hines
 Ronald Hinesman Jr.
 William and Teresa Hinton
 William and Anne Hipp
 David and Michele Hirsch
 Peter and Cameron Hoag
 Ryan and Carson Hobbs
 John Hodge
 Rebecca A. Hoelting-Short
 Margaret Hofland
 Mary Beth and Richard Holcomb
 Mark Holifield and Kim Semple-Holifield
 Chippy Holladay
 L. D. Holland*
 Linda and David Hollifield
 Reagan J. Hollis
 Margie C. Holmes
 Danny Hood*
 Elizabeth B. Hood
 Allen E. Hopper
 Julia and David Hornbeck

“There’s no end to charitable organizations that have genuine needs. The reality is you can’t give to all of them. Food is a fundamental necessity for all. You’ve got to have that.”

–David and Julia Hornbeck

Noreen Horrigan
 Stephen L. House
 Paul and Candace Houston
 Judy and William Howard
 Michael and Melissa Howard
 Christopher J. Huber and Marjorie Pak
 Martin and Ganelle Huddleston
 Dorothy Huenecke*
 Fontaine and Michael Huey*
 Laura S. Huffman
 Andrea R. Hughes
 Duane and Yvonne Hughes
 Ella Hughes
 Doug and Jana Hunter
 Julie Huntsinger
 Thomas E. Hurd
 Noel Hurley
 Marie L. Hurst
 John Hutchins and Lisa Humphreys*
 Irwin and Margaret Hyatt

Lauren Hyatt
 Julie and Jason Ingraham
 Robert Ingram
 Teresa and Richard Ingwersen
 J. Craig Inman
 Richard Isenberg and Holly Sternberg
 Jack Ito
 Joel and Mary Iverson
 Ramesh and Jana Iyer
 Erin and James Izen
 Becky Jackson
 Ambuj Jain
 Charles B. James
 Justin Janacek*
 Christopher Jankowski
 John and Pamela Jay
 Emmanuel Jean-Jacques
 Tim Jenkins
 William R. Jenkins
 Robert A. Jetmundsen
 Aziz Jiwani*
 Ben and Ann Johnson
 Bonnie K. Johnson
 David Johnson
 Erik Johnson
 George and Janet Johnson
 Jacqueline Johnson
 Jerrod S. Johnson
 Richard P. Johnson
 Robin M. Johnson
 Gay T. Jolley
 Bill Jonas and Lisa Gleim-Jonas
 Ashanti M. Jones
 Christopher W. Jones
 James and Tamarah Jones
 Ryan M. Jones
 Tommy H. Jones
 Wendy Jones King
 Michael and Lori Jordan
 Rodney Jordan
 Susan Joseph
 Betsy Judd and Bob Buckman
 Raghu Kakarala
 Sreenivas Kalathoor
 Douglas and Donna Kallman
 Anna M. Kalynych
 Rita and Eknath Kamat
 Glenn Kaplan and Andrea Curcio
 Justin Karam
 Wendy Karhu
 Vicki Karnes and Elizabeth Lotterhos
 Alex Katz and Ellen Doft
 Fabian and Angelika Kausche
 Kathryn B. Kearney
 Kristen A. Keirseay and William H. Stanhope

Michael and Marjorie Keith
 Valerie and Raymond Kelleher*
 Chip Kelley
 Millie and Kevin Kelley*
 Chris Kelly
 Gary Kelly
 John P. Kelly*
 Paul Kendig
 Catherine A. Kennedy
 Charles V. Kennedy
 Robert F. Kennedy
 Jean A. Kerr
 Sandra K. Kerr
 Nicole M. Kessell
 Noel and Sonnia Khalil
 Dawn and Tim Killenberg
 Silverlene J. Kindle
 Nancy S. King*
 Nora A. King
 Sandra and Robert King
 James E. Kinkead
 Donna and Kent Kirbow
 Judy B. Kirkwood
 David Kitchens and Linda Outlaw
 Gloria M. Kittel*
 Thomas E. Klenc
 Richard Klinger
 Philip Klinkenberg
 Dorinda and Forrest Knepper
 Thomas and Joyce Knutson
 Susan and Bradley Koeneman
 Todd and Ashley Koetje
 Sue Kolloru
 Jason Kopish
 Michael Kopp and Margaret McConnell
 Jacob Kornman and Sandra G. Linver
 Mrudul Kothari
 Elizabeth Boyle Kotz
 Joan Kramer
 Douglas and Cynthia Krapcho
 Christopher Krebs*
 Lisa Kreussling
 John and Cynthia Krewson
 Arvind and Jaya Krishnaswami
 Kelley and Paul Krohnert
 Donna and Bill Kukarola
 Kim and Robby Kukler
 Stephen Kuranoff and Cathy Selig
 Debra and Steven Kushnick
 Andrew Ladd
 Peter and Yuwadee Landskroener
 Bronwyn and Andrew Lang
 Louis D. Lanier
 Sharon Lantis
 Carol and William Lapidus

Rich and Gloria Lapin	Doris and Alex Malaspina	William and Marla Michalewicz
Monica and Camille LaScala	Betty and Ellis Malone	Victoria A. Milam
John and Sheri Latham	Charles and Catherine Mangan	Sarah and Federico Milla
Dolly R. Laubach	Paul and Laurice Mangelsdorf	Alice T. Miller
Jason Laughman	Suzanne and Ketan Manibhai	Anna Miller
Neil and Suzanne Lava	John Mann and Leslie Gerber	Donna R. Miller
Joan Lavin	Kathryn Marek	Elaine R. Miller
Jack and Doris Lawson	Lori Marshall and Martin Key	Randall and Pat Miller
Lynn and Alison LeBreton	James and Joan Martin	Roberta and Stevan Miller
John and Elizabeth Lee	Paula and Daniel Martin	Sandretta A. Miller
Steven Lee and Nancy Carson	Shari A. Martin	Nancy Millett
David and Lois Leeds	Marcy V. Massengale	Debra Millwood
Camille and Ben Lefkowitz	Henry Massey	Michelle Mindala-Freeman and Derek Freeman*
Joel and Tracy Lehrer	James and Jacqueline Massey	Salvatore J. Minicozzi
John C. Lentini II and Marian Epps	William H. Mastin	Elizabeth and David Minnix
Adam Leonard	Suji and Tom Mathew	Anita Mitchell*
J. Bancroft Lesesne	Robert S. Mathews	George Mitchell
Phyllis N. Lesho	John and Linda Matthews	Michael Mitchell
Steve Leslie	Scott D. Mauldin	Azhar and Nafisa Mithaiwala
Salli LeVan	Gail and James Maume	Lee R. Mobley
Tori Levine	Chris Maust	Lori and Jon Molander
William Levisay and Jennifer Saliers	Angela E. Maxwell	Kris and Jessica Molter
Erika A. Levy	James A. May	Mimi S. Monett
Greg and Lori Lewis	Susan and Daniel May	Alex Monica
Joel Libowsky	Gloria Mayo and	Ashley Monroe
Susan H. Liebeskind and Jeff A. Donnell*	Carole Mazurek	Wendy F. Mons
David and Marion Lifsey	Roy and Candice McAllister	Laura Montero
Ki-Hon and Tishawna Lin*	Margaret and Thomas McBrayer	David B. Montgomery*
Laura and Andrew Lindeman*	James McClellan	Rebecca C. Moon
Patricia G. Lindholm	Walter B. McClelland	David and Lori Moore
Carol Lipinski and David Herrigel	Malcolm M. McComb III	Ellen and Melvin Moore
Lara Robin Liptak	Robert McCormack and Andy Smith	Marnee F. Moore
Paul and Donna List*	Mark McCormick	Mary S. Moore
Carlene S. Little	Michael and Martha McDevitt	Paul and Leigh Ann Mooring*
Cheryl Lloyd	Bob McDonald*	Victoria E. Moreland
Adameka S. Lockhart	Marqus McDuffie	Albert Morelock*
R. Bruce and Anna Logue*	Shelley McGehee	Ken Morgan
Gerald and Liz Lohr	Linda and Dan McKay	Robin G. Moriarty
Sedalia S. Long	Matthew and Laura McKenna	Michael and Eileen Morra
Alvaro and Joan Lopez	George W. McKerrow Jr.	Kristina and Christopher Morris
Laura J. Lord	Mark and Reagan McLaughlin	Brian and Suzanne Morrow
Meredith A. Lord	Julia McMichael	Reverend Richard B. Morrow
Elizabeth and Thomas Loria	Todd and Linda McMullen	I. Sigmund Mosley Jr.
Janice Love and Peter C. Sederberg	Tim and Cindy McVay	Jackson T. Mott
Virginia Love	Richard McWilliams*	Ed and Nora Moulton
John Lovell	Leila Meghji	Michael Muller
Kelly D. Ludwick	William Mejia	Susan Muller
Tom Luse	Lynn and Sharon Melin	Jenny Mummert
Clifford L. Lutton Jr.*	Reverend John E. Merchant	Kelli Murbach*
John Lysaker and Hilary Hart*	Ricky and Lisa Meredith	Barbara J. Murray
Alexandre Macedo De Oliveira*	Ernest Merrill	Arun Murugan
Barbara and Walter MacGinnitie	Hays and Anna Mershon	Thomas Mutz
Ellen B. Macht	Steven Mertz	Jeffrey A. Myers
William R. MacKenzie	Manette Messenger*	Lisa A. Myers
Frank and Blanchette Maier	James Metcalf and Beverly Wynne-Metcalf	Sheryl A. Myers*

Winifred and Richard Myrick
 Glen and Tracy Nadel
 Mr. and Mrs. Samuel W. Narten
 Gail and Bernard Natter
 Martin Neary
 Jonathan and Anne Neiditz
 Elizabeth Neil
 Elizabeth S. Neiswander
 Karen L. Nelson and Gretchen Orrin
 Kent Nelson and Ann Starr
 Daryl Nenstiel
 Jason Nettles
 Catherine F. Nevins
 Philip Newman
 Margaret Newsome
 Michael Newton
 Phuc Nguyen-Dinh
 Margaret F. Nichols
 Joann T. Nicholson
 Philip R. Niehaus
 Kristi and Thomas Nissalke
 Lois Nobles
 Gary and Diane Noonan
 Derek Norred
 Henrietta Nottoli
 Richard and Yvonne Nowak
 Adam Noyes
 Balakrish Nuli
 McKee and Sally Nunnally
 Cindi and David Oakey*
 Richard O'Connell
 Ann M. Oglesbee
 Kristen and Chuck Oliver
 Patricia N. O'Neal
 Paul and Lucy O'Neill
 Samuel Oppenheim
 V. Paul Oppenheim
 Matthew Ornstein
 Summey Orr III
 Wayne Orr
 Robert and Nancy Ortner
 Helen and Donald O'Shea*
 Armin Oskouei
 Nancy and Mark Oswald
 Marc Overcash
 Susan Owens
 Benjamin Pace
 Lynn-Margaret Pace
 Helena Pachon
 Michael and Hope Paga
 James and Karen Page
 Margie M. Painter
 Angela Palm*
 J. Knox and Sarah Pannill
 Charles and Kathleen Paparelli

James and Mary Pardo
 Elizabeth Parker
 Jason and Brandi Parker
 Robert and Lisa Parker
 Courtney C. Parkinson
 Diane and Henry Parkman
 Zac Pasmanick
 Celia Patierno
 Deshea and Frank Patierno
 Angela Patterson
 Bree M. Pattillo
 Gretchen and Carl Patton
 Joan L. Patton
 Neal G. Patton
 Sharon Pauli
 Tracy R. Paulk
 Robert and Elisia Payne
 Carson Pease and Sandra Evans
 Noah P. Peeters and Rebecca F. Wasserman
 John Peifer and Deborah Lee
 Renee Pellom
 Jane Pelosi*
 Thomas and Kathy Pennella
 Suzanne Perkinson
 Sandra Perkowitz
 Michael J. Perry and Sarah O'Leary
 Natalya Perullo
 Nikhil and Katherine Perumbeti
 Faye and John Peterken
 David and Susan Peterson
 Nina E. Petkas and Stefan Tigges
 Robert A. Petter
 Kiwi Petticrew
 Diane Pfeifer
 Charlotte and Pete Pfeiffer*
 Margarette Philemond
 Joseph and Linda Phillips
 Mark J. Phillips
 Terry Pickren
 Andrew Pierce
 Christy Pierce
 Leslie and Hunter Pierson
 Carson Pilcher
 James T. Pirkle
 Christopher M. Pirrung
 Joy Plemmons
 Edward Plott
 Chris and Pam Pomar*
 Harold Porter
 Marsha Porter
 Jim and Victoria Potts
 Jane Powell
 Jon and Sam Powell*
 Thomas A. Power
 Christina and James Powers

Jacqueline S. Pownall
 Robin and Barbara Preston
 Laura and Thomas Prior
 George W. Prothro Jr.
 Joel C. Pugh
 Robert Purser
 Linda Purves
 Joan Queen
 Marilyn and William Quirk
 Elizabeth Rachford
 Tracy Raines*
 Ronald L. Raitz
 Gerald Rakestraw
 Richard and Marcia Raleigh
 Lana Ramthun
 Deborah F. Randall
 Gregory and Wanda Randall
 James Rapp
 David and Cecilia Ratcliffe
 Meredith Reagan
 Kim and Ashok Reddy
 Veena Reddy
 Judith A. Reece
 Joel W. Reed
 Leonard Reed
 Steven Reed
 Klaus O. Rees
 Robert E. Reid
 Tony Ressler and Jami Gertz
 Thomas J. Rettker
 Kahesha Ricard
 Charles and Christine Ricci
 Natosha R. Rice
 David and Patti Richards
 Neal Richardson
 Sheila D. Richardson
 Norman and Clare Richie
 Maureen and Colin Richman
 Jacob and Brandy Riherd
 Michael T. Riley
 Edward Rinderle
 William and Kim Rissler*
 Anna and Justin Rittenhouse
 Margaret and John Roach
 Lisa Roberts
 Mary and Joseph Robertson
 Courtney and Stephen Robinson
 Leah C. Robinson
 Alexandra W. Roddy
 Kathleen Rodriguez
 Nancy H. Rogers
 AJ Romaniello
 Steve and Tina Romaniello
 Edward Romano
 Sandy Rose

Jacqueline and Kendrick Rosenthal
 Douglas L. Ross
 Shirley and David Rosselot
 Keith R. Rothwell
 Douglas Rounds
 Thomas and Bernadette Rouse
 Matthew Roux
 Paul Rowlands*
 Craig K. Ruff
 Alan and Mary Pat Ruprecht
 Tina Sager
 Steven Salbu
 Nancy and Garry Saltmarsh
 Kimberly and Justin Sampson*
 Faye Sampson-Russell and George Russell
 Ronald Sanders
 Molly Sandman
 Teddi Sanford
 John A. Santogrossi and Jane Romweber
 Steve and Sara Sapp
 Scott C. Satterwhite and Pat Stern
 Joseph and Denise Saturna
 Jeffrey and Iris Sauls*
 Marion and Milan Savic*
 James Sawyer
 Amit K. Saxena and Smita Pawar
 Tom Scardino
 Alice and Robert Schenck
 Lynn E. Schlanger and David K. McCarthy
 John M. Schlarb
 Matthew and Marci Schlemmer*
 Rick Schmiersal
 Michael and Carrie Schmidt
 Stefan Schmieta and Dorte Wohmann-Schmieta
 Rebecca Schmitt*
 Janet and Edgar Schneider
 Richard A. Schneider
 Greg Schnepf
 Lauren and Tim Schrager
 Larry and Penny Schreck
 Michael C. Schreiber
 Brandi Schulze
 Paul Schur
 June and John Scott
 Rhonda and Van Scott
 Cliff and April Seal*
 Jeffrey Seaman
 Walter and Maria Semidey
 Joan V. Seppala
 Edward and Mary Sergeant
 Alayne and George Sertl
 Jay Severa and Erica Mitchell
 Frank W. Seymore
 Yahya Esat Sezer and Bengu Sezer

Milan and Bharat Shah
 Mitesh Shah
 Harry and Miranda Shapiro
 Jean A. Shapiro and Eric J. Jacobs
 Marilyn Shaw
 Michael and Lyn Shealy*
 Robert Sheft



This year we delivered over 7 million meals to high-need areas via Mobile Food Pantries.

Charles and Martha Shepherd
 Stephanie L. Sherman*
 Madhu and Jagdish Sheth
 Jeff Shiver
 Debra Shoaf
 Marsha Shrago
 Billie Shults
 Marsha and Kenneth Sikes
 Darren W. Silver*
 Steve and Kellie Simon
 Paul and Sharon Sims
 Rita A. Sislen
 Hezekiah Sistrunk
 Peter Siy
 John and Joanna Skinner
 Wolfgang and Carole Skudlarek
 Benjamin and Billie Jo Slinde
 Deborah and Billy Smith
 Jack and Kelly Smith
 John Smith and Barbara Church
 Julie Smith*
 Nora M. Smith
 Suzanne and Bryan Smith
 Suzy and Ed Smith
 John and Kathryn Smoltz
 Dan S. Smyly
 Caroline M. Smyth
 William H. Snyder
 Martha and William Solano
 Sabrina Solomiany
 Frances L. Somerville and Duane Dunlap
 Mr. and Mrs. Sam Soni
 Daniel and Jacalyn Sosin
 Chris and Caroline Spain
 Stephanie L. Sparkmon

Alan and Julie Spear
 Felicia Speetjens
 David and Denise Spinney
 Odessa K. Spraggins
 David and Trudy Sprunk
 Paula D. Stafford
 Margaret and John Stagmeier
 Andrea and Eric Stalemark
 Jennifer Stancil*
 Derrick Stanley
 Liz and Michael Stanton
 Steven Starker
 Stanton and Susan Stebbins
 Ani Steele
 Judith M. Steffy
 William Steger*
 Jeff S. Stehouwer
 Reverend Glenn D. Stephens Sr.
 Jamie Sternlieb
 Emily Stevens
 James and Melanie Stevens
 Rebecca and Edmund Stevens
 Andrew W. Stith
 Mary Stockton
 Michael and Lorie Stogner
 James Stoker
 Susanna M. Stoltzfus
 Mary Stotler
 Daniel and Andrea Strain
 Sherrie-Ann Straughn and Cyril Turner
 Andrew Strauss
 Jennifer L. Streeter*
 Grady and Jamie Strom
 Roger and Joanna Stroud
 Kay and James Stueve
 W. Randall and Charlene Sullivan
 William and Laura Sullivan
 Roger and Rosemary Sumrall
 Brandon Sutton*
 Allan and Bonnie Sweet
 Elham and Edmund Syed
 Tresa Syfert
 Phillip and Francine Tague
 Ben and Barbara Tallman
 Margaret and Kevin Tanner
 Steve and Jo Tapper
 Maria and Tim Tassopoulos
 Carol and William Taylor
 John and Carolyn Taylor
 Mark and Judith Taylor
 Paul R. Teigen
 Karen and Wayne Tevis
 Aaron Thomas
 John C. and Marilyn G. Thomas*
 Paul Thomas*

Ronald R. Thomas
 Gerald and Harriett Thuesen
 Burl D. Till III
 Celia Till*
 Michael and Frances Tobin
 Della Tolhurst
 Dorothy Toma*
 Jonathan Toppen and Jodi Wheeler-Toppen*
 James and Anne Topple
 Mark Toro
 Lauren Tosto
 Sarah Touse
 Robert Townley
 Dorothy and Josiah Townsel
 William L. Tracy and Robert E. Tracy
 Paul J. Traina
 Alison A. Trimble
 John F. Trotter
 Lynn Marie and John Trotti
 Lawrence R. Tucker
 Bryan Turley
 Clark Turner
 Richard T. Turner
 Rondi and Daniel Tuten
 Aneela and Tofique Usta
 Chris A. Van Beneden
 Lee and Dick Van Leuvan
 Deanne and James Vanke
 Monisa Vanlandingham
 Thomas W. Vasey
 Michael and Elizabeth Vaughan
 Todd Vermeer and Samantha Hodgkins*
 Byron and Sandra Vermillion
 Paul Vickery and Jamie Perniciaro
 Brett D. Vincent
 Valerie M. Visintainer
 Stephen D. Vitale
 Richard and Paula Vitaris
 Bill and Judy Vogel
 Julie Volosin
 Esther E. Voorhees
 Bryan and Caroline Vroon
 M. B. Wade
 Phillip Wade and Marcia Hurd-Wade
 Kyle and Christina Waide*
 Lesley and Trey Wainwright
 Moira and Chris Waldron
 Mary and Jonathan Walker
 Olivia Walker
 Michael and Stephanie Walsh
 Elizabeth and Douglas Walters
 Darlene G. Walton
 Elizabeth and Bruce Wanamaker
 Michael Ward
 Thomas Warren

Weslee Washington
 David and Carolyn Wasserman
 Michael and Harriet Wasserman
 Margaret and Edward Wasson
 Margaret E. Watkins
 Robert Watkins
 Ellen and Kevon Watson
 James and Nancy Watts*
 Jeffrey and Jennifer Watts
 Sherry and Lyndon Waugh
 Jonathan I. Wax
 John and Melinda Weathers
 Andrew J. Webb
 Donald and Rosemary Weber
 Arlene Webster
 John and Julie Webster
 Brett and Sara Weed
 Marsha L. Weeks
 Mary and Christopher Wegner
 Thomas and Pegeen Weihsmann
 Edward I. Weinberg
 John K. Weiser
 Pete Weissman
 Joshua and Maira Weitz
 Howard Welch
 Janice H. Welch
 Shawn B. Welch
 Laura and Charles Welkner
 Frederica and Neal Wellons
 C. Donald Wells
 Susan and Matthew Welty
 Donald Wert*
 Mr. and Mrs. Bill West
 Lynn and Dennis Whaley
 P. Wheeler
 Elizabeth N. Whitaker
 William G. Whitaker III
 Carol L. White*
 James and Cheryl White
 John White
 Rachel and Lester White*
 Shari and Courtney White
 Stephen White
 Ron and Emma Whited
 Connie L. Whitehead
 Martha L. Whitman and Larry E. Frankel
 Jesse and Amanda Wilbanks
 Caroline Wilbert
 Resa and Shawn Wildermuth*
 Monique Wilkerson*
 Sean Wilkins
 Gordon and Cyndee Wilkinson
 Jerry and Bev Wilkinson
 Alicia and Shaun Williams
 Almonese B. Williams

Dirk and Christi Williams
 Erin Williams
 Fred and Vivian Williams
 Gary and Susan Williams
 Janis Williams*
 Nancy Williams
 Robert and Gloria Williams
 Ted and Patricia Williams*
 Gail and Gary Willis
 Charles R. Willoughby
 Dana and Mitzi Wilson*
 Hilary M. Wilson and Scott Mullennix
 Skip and Nikki Wilson
 William K. Wilson
 Veronica Wilson-McElprang*
 Brandon Wilt*
 Robert K. Windham
 Stephen Winiarczyk
 Franchesca Winters
 John Wirth
 Phillip and Allison Wise
 G. Evans Witt and Amy R. Sabrin
 Christine and Doug Wolf
 Timothy W. Wolfe
 Faye L. Wong
 Glynnda and Dickie Wong
 Madeline Wong
 Leta Y. Woo
 James and Ruthie Wood
 Leonard and Carla Wood
 Ashley S. Woods
 William and Kathleen Woods
 David and Deborah Woodsfellow*
 Robert and Mary Yellowlees
 Lily Yen
 Rick and Jill Yost
 Jeffrey You
 Carla and Rickey Young
 Michael and Diana Young
 Michele and James Young
 Barney Zeitvogel
 Robert and Connie Zerden
 Charles Zimmer and Lori L. Tierney
 David and Joyce Zimmerman*
 Glenn and Emily Zimmerman

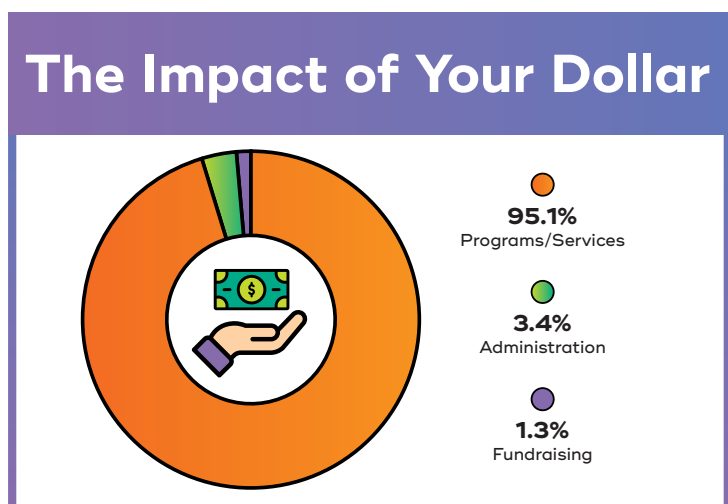
The Food Bank's Leadership Circle recognizes individuals giving \$1,000 or more annually, providing the financial leadership needed to end hunger in our community. Members enjoy special benefits including insider updates, invitations to special volunteer opportunities and events, and more.

Financials

2017-2018

Unrestricted Support & Revenue	2017-18	2016-17
Share Contributions	\$2,381,556	\$2,205,356
Special Programs, Events & Other	5,270,156	5,407,702
Contributions & Grants - ACFB	7,333,552	7,816,639
Contributions & Grants - Food Well Alliance	60,000	1,047,393
TEFAP/Federal Grants	9,076,065	8,160,462
Investment Income	807,575	1,049,582
Other Income	920,155	1,310,570
Donated Food & Product	111,810,400	117,010,855
Total Unrestricted	137,659,459	144,008,559
Temporarily Restricted Support & Revenue	2017-18	2016-17
Private & Governmental Contributions	1,527,879	2,944,582
Contributions & Grants - Food Well Alliance	3,290,400	-
Contributions & Grants - Capital Campaign	4,333,235	-
Investment Earnings	153,732	277,024
Total Temporarily Restricted	9,305,246	3,221,606
Total Support & Revenue:	146,964,705	147,230,165
Expenses	2017-18	2016-17
Program Services		
Collection, Storage & Distribution	134,754,997	134,949,775
Kids In Need	2,639,740	4,614,913
Public Education	206,239	147,497
Total Program Services	137,600,976	139,712,185
Management & General	4,724,454	5,136,724
Fundraising / Development / Events	2,820,065	2,181,130
Total Expenses:	145,145,495	147,030,039
Change in Unrestricted Net Assets	(2,886,387)	(918,580)
Change in Temporarily Restricted Net Assets	4,705,597	1,118,706
Net Assets at Beginning of Year	35,956,881	35,756,755
Net Assets at End of Year	\$37,776,091	\$35,956,881

Assets	2017-18	2016-17
Cash & Equivalents	\$4,515,254	\$3,645,504
Cash - Agency	-	377,666
Accounts Receivable	6,926,774	3,542,133
Inventory	4,780,349	7,043,053
Prepaid Expenses	305,540	178,149
Total Current Assets	16,527,917	14,786,505
Property & Equipment (net of depreciation)	10,377,270	10,620,283
Other Assets	13,615,572	13,848,521
Total Assets:	\$40,520,759	\$39,255,309
Liabilities & Net Assets	2017-18	2016-17
Accounts Payable / Accrued Expenses	\$2,402,414	\$2,662,027
Advances on Grants	342,254	258,735
Agency Liability	-	377,666
Total Liabilities	2,744,668	3,298,428
Unrestricted Net Assets	29,337,196	32,223,583
Temporarily Restricted Net Assets	7,610,895	2,905,298
Permanently Restricted Net Assets	828,000	828,000
Total Net Assets	37,776,091	35,956,881
Total Liabilities & Net Assets:	\$40,520,759	\$39,255,309



Every dollar donated makes a huge impact in our community.

Board of Directors 2017-2018

Ellen Bailey
Managing Director, HR
Midtown Consulting Group

Martha Brooks
Corporate Director
Harley-Davidson, Jabil Inc.

Eric Busko
Community Volunteer

F. John Case
Sr. VP, Operations & CFO
Morehouse School of Medicine

Stephen Cannon
CEO
AMB Group, LLC

James Dallas
Board Chair
President
James Dallas & Associates

Louisa D'Antignac
Trustee
The Wilbur and Hilda Glenn
Family Foundation

Martha "Marti" Fessenden
Principal/Attorney
The Fessenden Firm

Mitch Harrison
CEO
First Communities

Mark Holifield
Executive VP
The Home Depot

Raghu Kakarala
Managing Partner
FortyFour

Sue Kolloru
Partner
Boston Consulting Group

Robby Kukler
Vice Chair
Partner
Fifth Group Restaurants

Bill Levisay
Principal
Levisay Consulting

Matt McKenna
Community Volunteer

Todd McMullen
Partner
Moore Colson

Mario Montag
CEO
Predikto, Inc.

Mary Moore
President
The Cook's Warehouse

Mike Newton
VP, Transportation
UPS West Zone

Natosha Reid Rice
Associate General Counsel
Habitat for Humanity
International

Margaret "Marjy" Stagmeier
Treasurer
President
TriStar Investment

Andrew Stith
CEO
OnsiteRIS, LLC

Mike Stogner
Managing Director
US Trust, Bank of America

Kyle Waide
President & CEO
Atlanta Community Food Bank

Lesley T. Wainwright
Secretary
Assistant General Counsel
Turner

Libby Wanamaker
Community Volunteer

Jeff Wojtkowiak
VP, Operations
The Kroger Co.

Adam Noyes
Advisory Chair
President
Proof of the Pudding



Advisory Board 2017-2018

Adam H. Noyes
Proof of the Pudding

Alttagracia Gomez
The Ritz-Carlton, Atlanta

Andrew Traub
Executive Chef
A&S Culinary Concepts, LLC

Arlease Brady
SunTrust

Arvind Krishnaswami
MedLytix, LLC

Ashley Purcell
Hall, Booth, Smith PC

Bill Coontz
The Dalton Agency

Bradley Koeneman
General Manager
Hilton Atlanta

Brittany Allgood
Delta Air Lines

Caroline Wilbert
The Wilbert Group

Chip Colson
Manager
Ste. Michelle Wine Estates

Lee Woodham
FreshPoint Atlanta

David Abes
Director of Operations
Buckhead Life Restaurant
Group

David Malone
Gas South

Doug Foley
President
Center Cut Restaurant Group

Guy Thomson
Senior Vice President
Pittypat's Porch

Holly Beach
Ste. Michelle Wine Estates

James Stevens
Troutman Sanders

Jason Sanders
The Ritz-Carlton, Buckhead

Jim Cullinan
Kaiser Permanente

Joanne Bryant
Charles Schwab

John McDaniels
Concentrics Restaurants

John Wolcott
ALSCO

Jordy Gamson
IceBox

Joseph Uhl
Renaissance Atlanta Waverly
Hotel

Karen Brodie
Bank of America

Katherine Williams
Diaz Foods

Katie Lamere
FreshPoint Atlanta

Kevin Rathbun
Executive Chef & Owner
Rathbun's, Krog Bar; Kevin
Rathbun Steak

Lauren Fernandez
Origin Development Group

Liana Moran
The Wilbert Group
Marina Alden Bryant
President
Special Projects by Marina

Mark Lerner
Financial Advisor
LernerRouille Financial
Strategies

Matthew Rao
RAO Design Studio, Inc.

Melanie Bollinger
Coca-Cola

Michael Tatum
Turner Broadcasting

Neal Patton
General Counselor
AMC, Inc.

Nicole Kessell
Invesco

Paul Baker
Sterling Risk Advisors

Paul Mooring
Buckhead Meat

Rachal Batiste
The Omni Hotel

Rashmee Goes
US Trust

Ricky Steele
Chief Development Officer
Steele Technology Partners

Ronald Fennel
President
Georgia Capitol Associates

Ryan Costigan
Dinova

Sean Hyslop
Sysco Atlanta

Sheryl Myers
Comotion Films

Shireen Herrington
Ford Fry Restaurants

Theresa Schroeder
Turner Construction

Tim Swoger
HCC Insurance

Todd Rushing
Owner
Concentrics Restaurants

Tom Minella
Thrive Farmers International

Tony Martin
Vice President
Strategic Clients
MedLytix, LLC

Virginia Willis
President
Virginia Willis Culinary
Productions, LLC